

AMERICA'S SPACEPORT No. 1
CAPE CANAVERAL

Cape Canaveral has become one of the world's most famous datelines. The name conjures visions of missiles, space jaunts, satellites and astronauts.

Technically, the proper name for the military installation is Cape Canaveral Missile Test Annex and it is but one of a dozen stations belonging to the Atlantic Missile Range which extends some 10,000 miles down the Atlantic Ocean and into the Indian Ocean. The range is operated by the Air Force Missile Test Center which has its headquarters at Patrick Air Force Base, Florida.

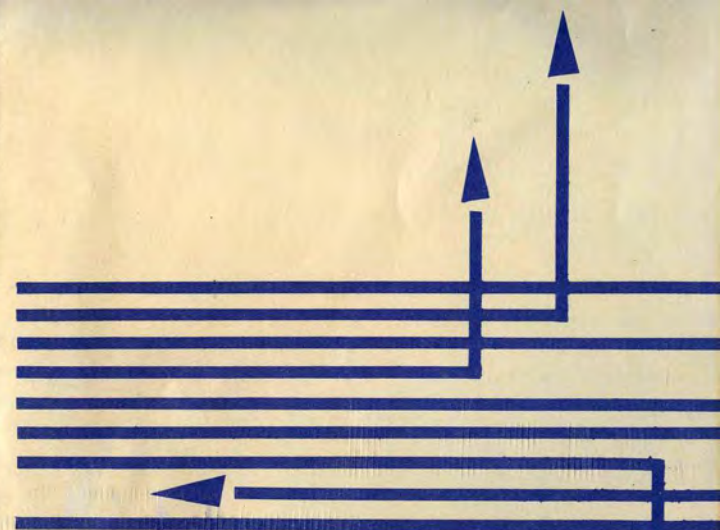
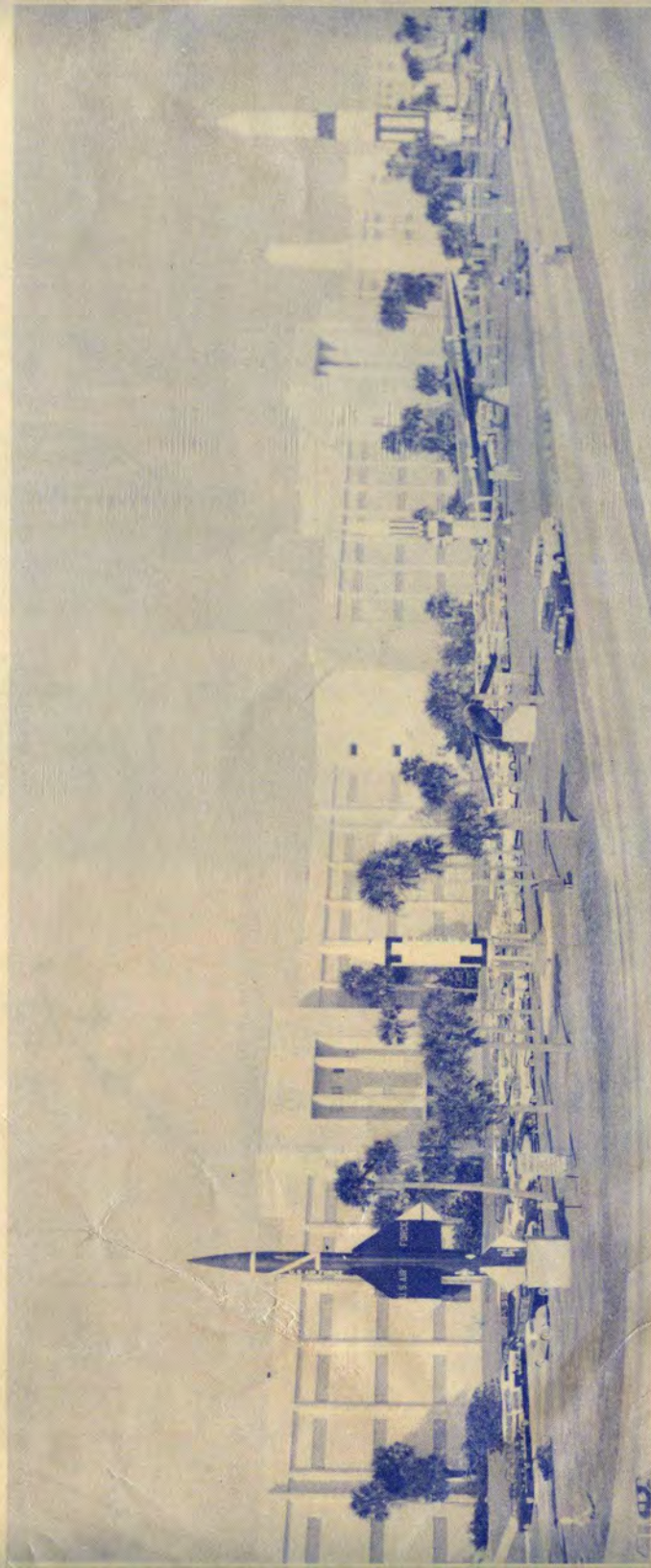
Thousands of tourists make a special trip to the Cape hoping to see the launch pads and missiles, and they are understandably disappointed when they find that the Cape is a heavily guarded area closed to the public. Of course, since many of the tests and projects affect our country's security, every precaution must be taken.

Because of the restrictions, and due to the tremendous interest in our nation's missile and space programs, the Air Force Missile Test Center has erected a display of actual missiles at the south edge of Patrick Air Force Base on Route A1A. These missiles include such heavyweights as Titan and Thor, early cruise missiles such as Snark and Bomarc, the Navy's Polaris which is launched from underwater, and the Army's newest tactical missile, the Pershing.

Visitors find this display an interesting and impressive representation of America's missile might and well worth seeing. The display lends itself especially well to family photography. The map provides an easy-to-follow guide from either Melbourne or Cocoa.



Air Force Missile Test Center
Patrick Air Force Base, Florida



VISIT



**THE
MISSILE
DISPLAY**

**patrick air force base
florida**





ORLANDO

TITUSVILLE

COCOA

US 1 SOUTH

MERRITT ISLAND

RT 520 CAUSEWAY

COCOA BEACH

ATA SOUTH

PORT CANAVERAL

ENTRANCE TO CAPE CANAVERAL RESTRICTED AREA NO VISITORS

EAU GALLIE

MELBOURNE

US 1 NORTH

ATA NORTH

INDIALANTIC

AIR FORCE MISSILE TEST CENTER MISSILE DISPLAY

A T L A N T I C

O C E A N

COURTESY OFFICE OF INFORMATION ATLANTIC MISSILE RANGE